



Aplicaciones y Tecnología, S.A.



Configuration Program

Control and, Protection and Control Terminal



Description

All the bay position devices incorporating control functions, require certain configuration which specifically characterize each equipment according to its application. This configuration is implemented in the equipment before shipping. Additionally, there is a software module by the name of **Zvercom**, running in compatible PC and WINDOWS environment.

The function of **Zvercom** is to facilitate the design and/or modification of the configuration that will be implemented in equipment performing certain control functions.

Functions

The main functions that characterize **Zvercom** are as follows:

- Design and modification of the configuration

LOGIC

The configuration is designed based on logical gates that are decided by the user and which are equipped with:

- Temporizations
 - Analog settings
 - Boolean settings
- or a combination of them.

Logical feasible functions:

- Interlockings
- Logic for command outputs
- Signaling
- Load shedding functions
- Automatic control
- Auxiliary functions

PHYSICAL I/O's

All the I/O logical signals can be associated to any physical input or output of the equipment

SINGLE LINE DIAGRAM

The applicable single line diagram is selected from a list of diagrams stored in the equipment memory. Each element of the diagram is equipped with the required signals

ALARM SYSTEM

Option for alarm recognition
Define the number of screens of the equipment
Define texts and inputs of the alarms

COMMUNICATIONS PROTOCOL

Configuration of the communication between the equipment and the central unit

- **Compiling and reporting**

Error checking

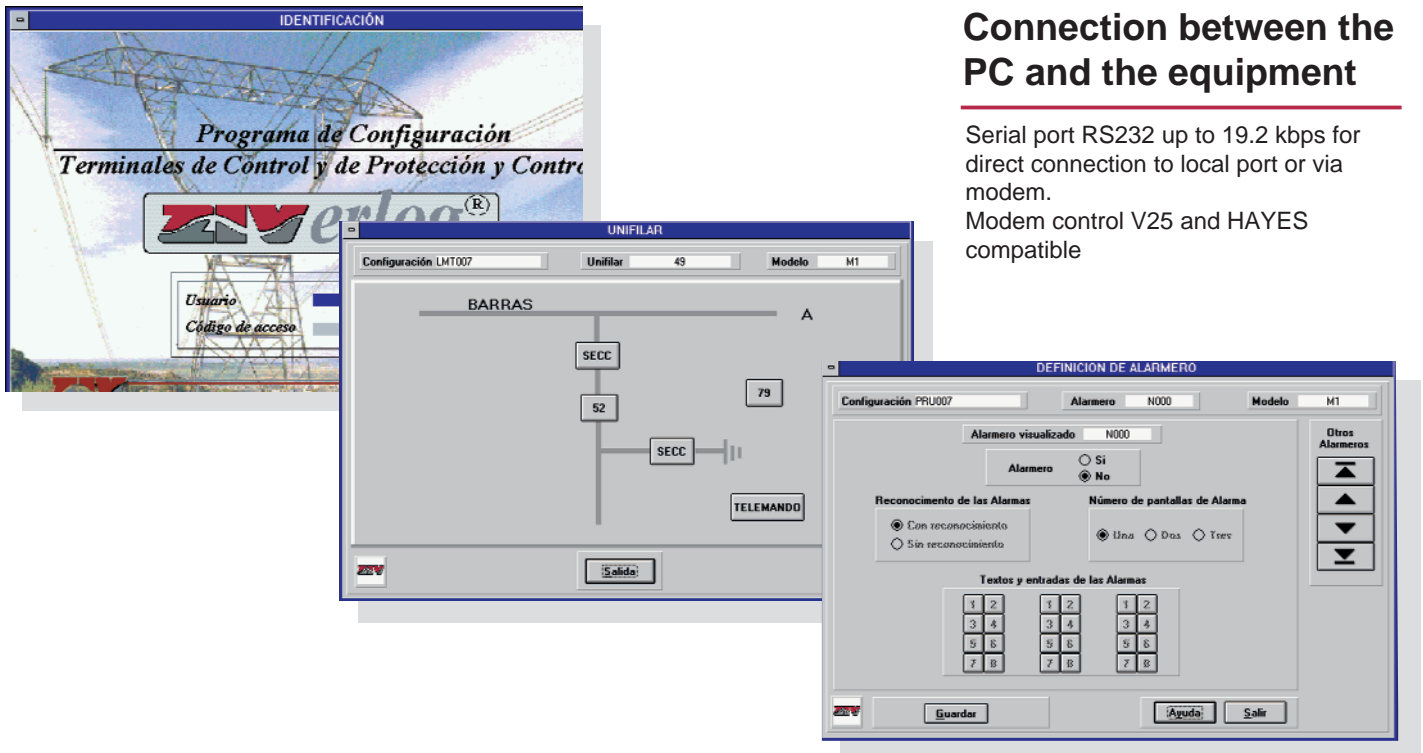
- **Printing option for the configuration to be loaded in the equipment**

Unloading the configuration into the equipment

Characteristics of the Connection between the PC and the equipment

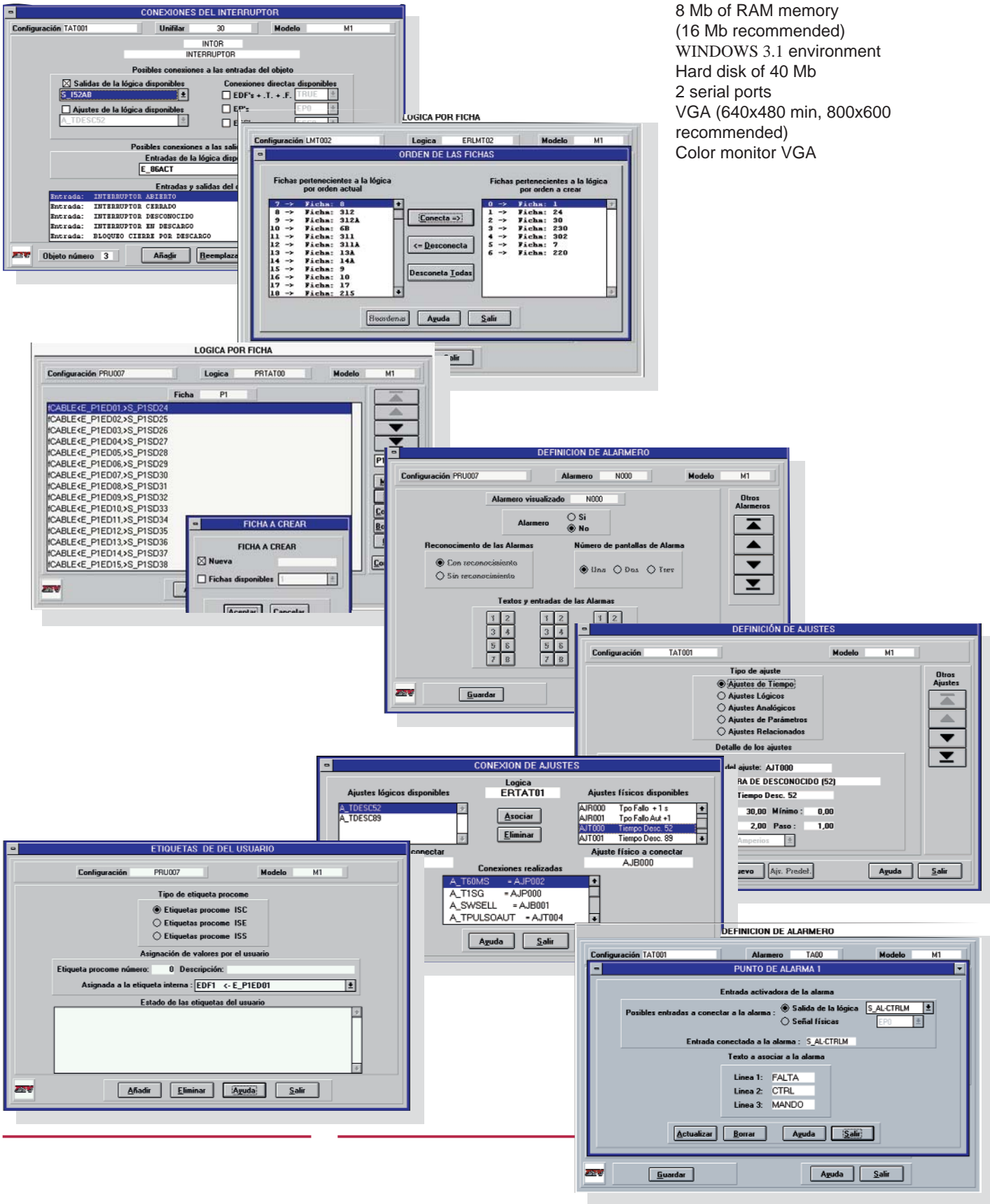
Serial port RS232 up to 19.2 kbps for direct connection to local port or via modem.

Modem control V25 and HAYES compatible



Minimum PC requirements

8 Mb of RAM memory
(16 Mb recommended)
WINDOWS 3.1 environment
Hard disk of 40 Mb
2 serial ports
VGA (640x480 min, 800x600 recommended)
Color monitor VGA



Parque Tecnológico - 208 48016 - Zamudio (SPAIN) - Aptdo, 757 - 48080 Bilbao (SPAIN) - Tel.: 34-4-452 2003 - Fax: 34-4-452 2140
Sales Office: Avda. Vía Dos Castillas, 9CP2 - 28224 Pozuelo de Alarcón - Madrid (SPAIN) - Tel.:34-1-352 7056 - Fax: 34-1-352 6304



Aplicaciones y Tecnología, S.A.

The information contained in this catalogue is only indicative. For further information, please consult our manual or our Sales Office